



Definitive Guide to

Agentic AI-Ready Data Architecture

How to Build Unified, Current,
and Trusted Business
Context for Enterprise AI





Contents

- Introduction: How an AI-Powered Business Operates ____ 3
- The Enterprise AI Pressure Zone:
Why The Race Is Already On _____ 4
- Enterprise AI Use Cases _____ 6
- Enterprise AI Outcomes in Practice _____ 9
- How These Outcomes Show Up
Across Different Organizations _____ 11
- The AI Failure Zone: Where Most
Organizations Get Stuck _____ 12
- The Root Cause: Why Enterprise AI
Breaks Without Business Context _____ 13
- The Frankenstack: How Fragmentation Happens _____ 14
- The Missing Layer: What a Contextual
Data Layer Is (and Isn't) _____ 15
- The Architecture Shift: From Pilots to Enterprise _____ 16
- What High-Performing Enterprises Do Differently _____ 17
- The Leadership Imperative:
Impact on AI Leaders & Builders _____ 18
- AI Data Architecture Playbook: Your Path Forward _____ 19
- Making the Build vs. Buy Decision
for a Contextual Data Layer _____ 20
- The Moment of Decision _____ 23



Introduction: How an AI-Powered Business Operates

Imagine a business where enterprise AI is a trusted teammate, embedded in daily work and consistently useful because it understands what matters to your business in real time.

Many organizations are working toward this — but are finding that models alone aren't enough.

In an AI-powered business:

- **Employees collaborate with co-pilots** that understand role, goals, permissions, and the enterprise knowledge they're allowed to use, accelerating thinking and execution.
- **Teams move from signal to action faster** because AI can connect the dots across customers, products, operations, and decisions — not just summarize isolated documents.
- **Decisions speed up**, grounded in current, explainable business context with traceable sources — not stale dashboards or tribal knowledge.
- **Customer issues resolve faster** because AI can retrieve and reason over the right mix of information: runbooks, tickets, policies, product telemetry, conversations, and commitments.
- **Partnerships strengthen** because collaborators work from consistent, trustworthy context, not conflicting versions of the truth.
- **Work becomes more meaningful** as AI removes repetitive tasks and frees people to focus on strategy, creativity, and high-impact problem solving.

What makes this possible isn't better models alone. It's simplified data architecture designed for enterprise demands and scale.

Outcome: Enterprise AI moves from experimentation to daily impact — because people and AI operate on unified, current and trusted business context.



The Enterprise AI Pressure Zone: Why The Race Is Already On

Across industries, something unprecedented is happening. Enterprise AI has become a competitive mandate. Unlike previous technology cycles, AI advantage compounds quickly. Small early leads in data and context translate into lasting competitive separation.

Executives, boards, teams, and customers all feel it. Every CEO is asking, "Where are our co-pilots? Where are our agents? How are we using Enterprise AI to win?"

Every board is asking: "How does Enterprise AI improve revenue, reduce cost, strengthen compliance, and accelerate innovation?"

And competitors are already pulling ahead with context-aware AI. AI that can reliably retrieve and reason over shared, connected,

trustworthy enterprise knowledge, not just isolated documents. Investors are already seeing the impact in the numbers. According to [PwC's 2025 Global Investor Survey](#), "Over the past year, investors report AI-driven improvements in productivity (86%), profitability (71%) and revenue gains (66%) in the companies they invest in."

The pattern behind these gains is consistent: Enterprise AI succeeds only when it's grounded in unified, current and trusted business context. A Contextual Data Layer provides the foundation that makes this context usable and reusable across co-pilots and agents. In practice, this advantage shows up in a few repeatable ways.

Enterprise AI-powered advantages emerging today:

- **Faster issue resolution** with AI agents that understand the business context across tickets, docs, logs, policies and runbooks before recommending actions to humans
- **Smarter decisions** via natural-language insights backed by **traceable sources and relationships**
- **More trustworthy answers** using **ContextRAG (GraphRAG, VectorRAG, HybridRAG) and hybrid retrieval** over connected enterprise knowledge
- **Stronger security and compliance** through centralized access controls, auditability, and contextual anomaly detection

These capabilities are already reshaping how leading teams work. Companies operating with a **Contextual Data Layer** are resolving issues faster, operating with greater clarity, launching AI features at unprecedented speed, and making decisions the organization can trust.

The gap between leaders and laggards is widening fast.



Outcome: Competitive advantage increasingly belongs to organizations that establish shared business context early — before fragmented data architectures turn speed into long-term drag.



Enterprise AI Use Cases

Organizations across industries are already creating separation, not because they hired more AI engineers or bought more models, but because they invested in a Contextual Data Layer that makes context reusable across use cases.

In practice, this advantage shows up in a set of repeatable patterns, starting with the most universally applicable. These use cases span both technical and business functions, but they all rely on the same trusted AI data foundation: **unified, current and trusted business context — explainable, up-to-date and ready for AI to reason, decide and act.**

Support Co-Pilots

Organizations with millions of documents, tickets, logs, runbooks, SOPs, and playbooks can resolve issues 20% faster. Support agents act as always-on digital experts, unifying enterprise knowledge and operational context to triage incidents, cite the right evidence, and recommend step-by-step resolution paths — including guided runbook execution and (when approved) handoffs to workflow automation — to reduce resolution time, increase employee productivity, and improve decision quality across the business.

Who benefits most?	What changed?	Outcomes
<ul style="list-style-type: none"> Large enterprises with high ticket volume (support, HR, IT) SaaS and product companies with complex troubleshooting workflows Global organizations with distributed teams needing consistent and explainable outcomes 	<ul style="list-style-type: none"> Multi-model and multimodal contextual data layer (graph, vector, document, key value, search) across tickets, logs, and documentation Connected context (entities, relationships, and temporal state) to improve precision and explainability Reusable retrieval services that multiple teams can share (instead of rebuilding pipelines per use case) 	<ul style="list-style-type: none"> Reduced escalations and Mean-Time-to-Resolution (MTTR) More consistent, explainable answers A trusted AI agent used across Support, Sales, HR, and Finance



Real-Time Video Intelligence

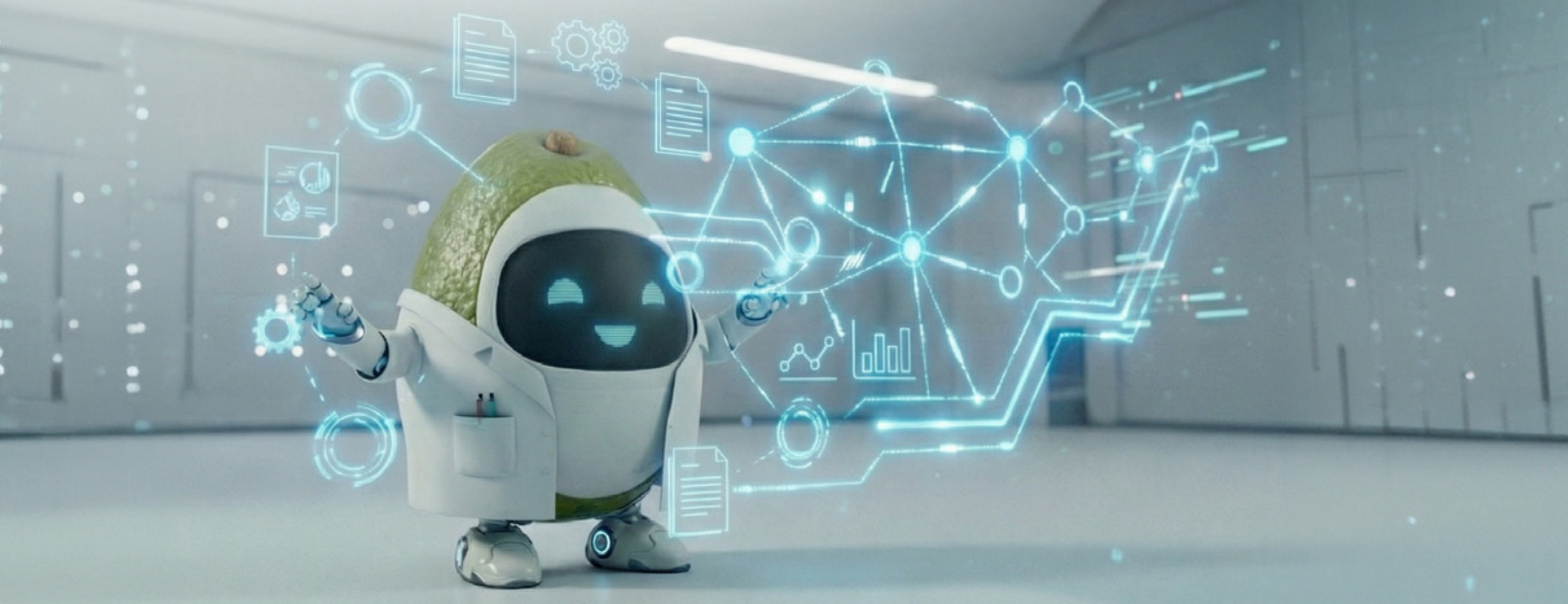
Organizations that once spent hours reviewing video streams are now getting instant answers powered by a Contextual Data Layer.

Who benefits most?	What changed?	Outcomes
<ul style="list-style-type: none"> • Retailers with loss prevention and store operations workflows • Airports and transportation hubs • Manufacturing floors requiring real-time safety and process intelligence 	<ul style="list-style-type: none"> • Multi-model and multimodal context layer (graph, vector, document, key value, search) • Reasoning across time, locations, and camera streams using connected metadata and retrieval • Event and metadata extraction (objects, timestamps, locations) connected to enterprise context for retrieval and reasoning 	<ul style="list-style-type: none"> • Accurate, explainable, real-time insights across streams • Safer, more efficient operations • A scalable foundation for enterprise-grade video intelligence

Engineering Intelligence & Issue Resolution at Scale

Teams managing millions of logs, bug reports, and diagnostics are finally correlating issues across products and teams, instantly.

Who benefits most?	What changed?	Outcomes
<ul style="list-style-type: none"> • SaaS, enterprise software, and platform teams • Hardware companies with massive diagnostic data • Engineering organizations running multi-service architectures 	<ul style="list-style-type: none"> • Multi-model and multimodal contextual data layer (graph, vector, document, key value, search) • Graph-powered correlations at massive scale • Automated triage and prioritization 	<ul style="list-style-type: none"> • Faster, more reliable engineering decisions • Improved product quality and development velocity • Real-time intelligence instead of manual investigation



Trusted Enterprise AI for Regulated Industries

Organizations operating under strict compliance requirements are moving Enterprise AI pilots to production faster — with full explainability.

Who benefits most?	What changed?	Outcomes
<ul style="list-style-type: none"> Financial services, insurance, and payments Healthcare providers and life sciences Government, public sector, and defense agencies 	<ul style="list-style-type: none"> Multi-model and multimodal contextual data layer (graph, vector, document, key value, search) Built-in lineage and provenance, with policy controls where needed Simplified architecture replacing brittle pipelines 	<ul style="list-style-type: none"> Faster deployment of trusted AI apps Reduced cost and complexity A scalable, compliant-by-design foundation

Real-Time Insights for Retailers, Suppliers & Consumers

Platforms once stuck with stale BI dashboards now deliver real-time pricing, promotion, and assortment insights.

Who benefits most?	What changed?	Outcomes
<ul style="list-style-type: none"> Retailers, Consumer Packaged Goods (CPG), and supply chain platforms E-commerce marketplaces Merchandising, pricing, and operations teams 	<ul style="list-style-type: none"> Multi-model and multimodal contextual data layer (graph, vector, document, key value, search) Natural-language retrieval that can be materially faster in early implementations by reducing cross-system joins and brittle pipelines Hybrid search powering supplier and retailer intelligence 	<ul style="list-style-type: none"> Live insights that drive margin and customer experience Personalized consumer experiences A platform that leapfrogs competitors with lower Total Cost of Ownership (TCO)

Across these use cases, the pattern is consistent: when current and trusted, Enterprise AI delivers faster results, stronger economics, and greater trust at scale.



Enterprise AI Outcomes in Practice

When organizations break free from fragmented IT systems, siloed data, and disconnected operational tools and build on a Contextual Data Layer that provides unified, current and trusted, the impact is immediate and measurable.

Revenue & Margin Outperformance

Organizations that operationalize AI on strong data foundations outperform peers on growth and profitability.

- **66% of investors** report AI-driven revenue gains in the companies they follow (PwC).
- AI leaders achieve approximately **1.7× higher revenue growth** and **1.6× higher EBIT margins** compared to laggards — driven by scalable foundations rather than isolated pilots.

Context-aware co-pilots enable more relevant engagement across sales and service, accelerating decision-making and improving conversion quality.

Lower Cost of Operations Through Consolidation and Reuse

AI impact increasingly shows up in cost structure, not just experimentation.

- **71% of investors** report profitability improvements from AI adoption (PwC).
- Automation across systems reduces manual handoffs and reconciliation.
- Consolidating fragmented pipelines helps control infrastructure sprawl and rising AI operating costs.

Gartner consistently points to poor data quality, integration complexity, and cost overruns as leading causes of GenAI project failure beyond PoC.

Measurable Productivity Gains Across the Enterprise

AI value is increasingly realized through time saved and faster execution — not headcount reduction.

- **86% of investors** report AI-driven productivity improvements (PwC).
- Knowledge workers spend less time searching, validating, and reconciling information when AI is grounded in shared, connected, and trustworthy business context.
- AI agents and co-pilots support engineering, product, HR, finance, and operations with consistent, explainable answers embedded directly in daily workflows.
- McKinsey notes productivity gains depend on redeploying saved time effectively — something only possible when AI outputs are trusted, explainable, and operationally integrated.

Reduced Risk & Stronger Governance

Risk and governance failures remain a primary barrier to scale.

- Gartner predicts **30% or more of GenAI projects** will be abandoned post-PoC by end of 2025 due to data quality and risk control gaps.

- **61% of U.S. organizations** are already in “strategic or embedded” Responsible AI stages where governance is integrated into operations (PwC).
- **78% of mature organizations** rate themselves very effective at Responsible AI priorities, compared to **35%** in earlier stages.

Shared context, traceability, and provenance turn trust from an afterthought into a built-in capability.

Faster Innovation Cycles

Reusable business context serving multiple agents accelerates innovation across the enterprise.

- **64% of respondents** say AI is already enabling innovation (McKinsey).
- **62%** report their organizations are experimenting with AI agents.
- “Future-built” companies see up to **5× revenue** increases and **3× cost reductions** from AI versus others (BCG), powered by scalable foundations rather than one-off pilots.

These are the outcomes AI-powered businesses are already delivering in practice.

Outcome: Across industries and functions, reusable business context turns isolated AI wins into scalable, enterprise-wide capabilities.



How These Outcomes Show Up Across Different Organizations

The outcomes are consistent — but how they manifest varies by organization.

Software & Product Companies

Faster iteration cycles, tighter customer feedback loops, and AI co-pilots that accelerate engineering, product, and support without rebuilding context for each feature.

Government, Public Sector, and Regulated Organizations

Simplified case resolution, clearer decision-making, and increased trust as AI operates on traceable, explainable, and current information.

Innovative AI Startups

Higher velocity from day one, embedding intelligence without inheriting the fragmented patterns that slow larger organizations later.

Large Enterprises Across Industries

Reduced silos, more personalized customer experiences, lower operational risk, and teams operating from the same shared understanding of the business.

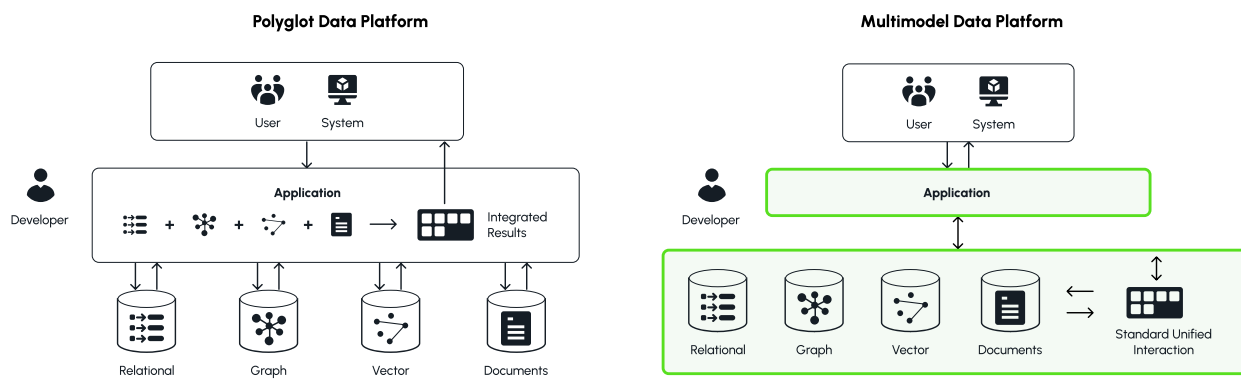
Outcome: While implementations vary by organization type, the underlying driver is the same: shared context enables faster execution, stronger trust, and sustained AI impact.

The AI Failure Zone: Where Most Organizations Get Stuck

Every leader driving AI feels the same frustration: you're shipping pilots, but nothing truly scales beyond proof of concept (POC).

Co-pilots work in demos but fail in production. Retrieval drifts. Pipelines break. Different teams get different answers to the same question. Governance fragments across tools. Costs increase faster than value. The root cause is a lack of unified, current and trusted business context that is ready for AI reasoning. The underlying data architecture makes scale brittle, inconsistent, and expensive.

Most enterprises are trying to build Enterprise AI on a **fragmented AI data infrastructure** that was never designed for reasoning, multimodal context retrieval. Separate vector databases, graph databases, document stores, key value stores, and search engines — plus one-off pipelines — scatter the business context AI needs to deliver accurate, explainable outcomes.

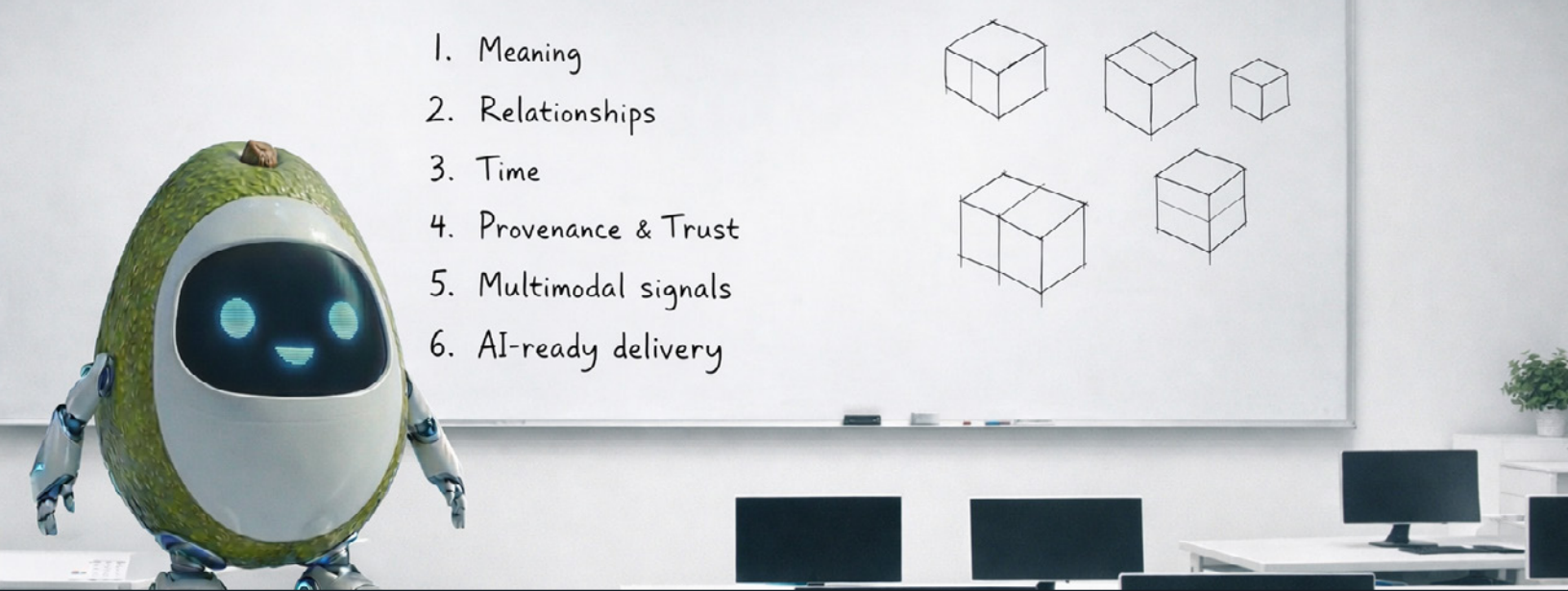


Unified Data Context Across Graph, Vector, and Document

This is the **AI Failure Zone**. The place where ambition collides with fragmentation, where trust breaks down, where momentum dies, and where most organizations remain stuck today.

And this is why most organizations are not seeing a meaningful return on their Enterprise AI investments. **Without business context, AI cannot deliver the accuracy, consistency, or explainability the business expects.**

Outcome: Without a shared contextual data foundation, Enterprise AI stalls. It gets trapped between promising pilots and production systems the business can't trust.



1. Meaning
2. Relationships
3. Time
4. Provenance & Trust
5. Multimodal signals
6. AI-ready delivery

The Root Cause: Why Enterprise AI Breaks Without Business Context

Enterprise AI doesn't fail because of the models. It fails because the underlying architecture lacks unified business context. The symptoms are visible in production; the cause lives deeper in the architecture. Without it, AI can't reason, decide, act or earn trust.

AI today must understand:

- **Meaning:** shared semantics and definitions across teams
- **Relationships:** how customers, products, incidents, policies, and systems connect
- **Time:** what was true when; changes and current state
- **Provenance & Trust:** where information came from and how it changed
- **Multimodal signals:** text, code, logs, and media connected to the same context
- **AI-ready delivery:** retrieval, ranking, and citation services that make context usable by copilots and agents

This is the difference between a one-off RAG pipeline and a reusable contextual data layer that multiple agents can call consistently. Meeting these requirements consistently isn't

possible on fragmented data systems — it requires a single data foundation designed to support meaning, relationships, time, provenance, and AI-ready delivery as one.

But in most enterprises, these elements live in different systems with different meanings.

When context is fragmented, AI breaks:

- **Incomplete retrieval** → hallucinations and inconsistent answers
- **Context drift** → models losing alignment with truth
- **Pipeline fragility** → failures whenever schemas, data, or models change
- **Exploding costs** → teams rebuilding business context for every new use case

Analyst research on multimodal data platforms highlights a consistent requirement for agentic and retrieval-heavy AI: a unified Contextual Data Layer that supports key value, search and multimodal workloads — without stitching systems together.

In other words: AI cannot outperform the data.



The Frankenstack: How Fragmentation Happens

Nobody sets out to build a Frankenstack. It emerges from a series of understandable decisions — made under pressure, in silos, and without an AI-ready data architecture blueprint.

A vector database for one use case. A graph database for another. A document store for content. Key value for entities and state. A search engine for logs and events. A dozen RAG pipelines stitched together across teams.

Each solved a local problem. Together, they created global fragmentation.

This is the heart of **Frankenstack Fragmentation**: a patchwork of separate vector databases, graph databases, document stores, key-value stores, and search engines — plus disconnected pipelines for embeddings, RAG/GraphRAG/HybridRAG, agents, multimodal ingestion, GPUs, and LLM integrations.

Underneath this sprawl is the **Five Factor Problem**:

Organizations are forced to adopt, operate, and reconcile **five different data engines** — graph, vector, document, key-value, and search — just to preserve the business context AI depends on. Even in the best

case, this creates hundreds of architectural combinations, each with its own contracts, integrations, SLAs, scaling patterns, drift risks, and failure modes.

Indranil Bandyopadhyay, Principal Analyst at Forrester, captured the root cause clearly in the [Multimodel Data Platforms Landscape, Q4 2025 report](#): "Traditional data architectures weren't built for this moment. Agentic AI demands unified context."

The consequences are predictable:

- Context scattered across systems
- Retrieval inconsistencies and contradictory answers
- Pipeline fragility as schemas, models, and data shift
- Redundant semantics and duplicated metadata
- Rising cost per use case as complexity compounds

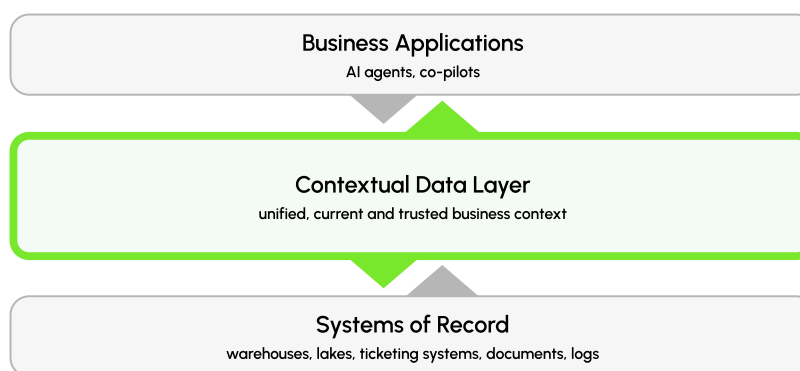
This isn't technical debt, it's **context debt**. And context debt kills AI scale.

Outcome: What starts as flexibility becomes long-term constraint — data fragmentation turns context into debt that compounds with every new AI use case.

The Missing Layer: What a Contextual Data Layer Is (and Isn't)

A Contextual Data Layer (CDL) gives Enterprise AI shared meaning, connected relationships, and trusted, up-to-date business context — so co-pilots, chatbots, and agents can retrieve and reason with consistency and confidence.

Think of the Contextual Data Layer as the **bridge between enterprise data systems and LLMs**. It sits above fragmented sources — such as warehouses, lakes, ticketing systems, documents, and logs — and below co-pilots/agents. It provides shared semantics, connected context, and provenance that make AI reliable at enterprise scale.



A Contextual Data Layer:

- **Establishes shared meaning**, ensuring consistent definitions across systems and teams
- **Connects entities through relationships**, so AI can reason across customers, products, policies, and operations
- **Preserves provenance and lineage**, enabling explainable answers and confidence in results
- **Maintains temporal context**, capturing what changed, when, and how it impacts decisions
- **Supports multimodal enterprise data**, spanning structured records, documents, logs, code, and media within the same contextual foundation

- **Delivers AI-ready retrieval and reasoning**, enabling context to be reused across co-pilots and agents at scale

When this foundation is in place, AI stops behaving like a best-guess engine and starts behaving like a true collaborator:

- Agents, co-pilots, and chatbots become trustworthy.
- Retrieval becomes more accurate, complete and explainable.
- Teams move faster — and with confidence.

Ultimately, a Contextual Data Layer becomes the foundation of an AI-powered business — **driving better outcomes, operational trust in production, and continuous innovation.**

The Architecture Shift: From Pilots to Enterprise

Most organizations don't fail at Enterprise AI because they lack ideas. They fail because the architecture that supports early pilots cannot scale to production.

AI pilots are typically built fast and locally: a single use case, a narrow dataset, a bespoke retrieval pipeline, and a specific model. This works in demos. It breaks down as soon as organizations try to reuse, extend, or operationalize AI across teams.

As Enterprise AI matures, the architectural requirements change fundamentally:

- from single use cases to many
- from isolated datasets to business context
- from experimental pipelines to production systems
- from model-centric thinking to context-centric design

What worked for a pilot becomes a liability at scale. Each new co-pilot or agent requires rebuilding context, re-integrating data, and re-establishing trust. Over time, pilots accumulate into fragile, expensive architectures that are hard to evolve.

The shift to Enterprise AI requires a different data foundation — one where business context is no longer rebuilt for every application, but standardized, shared, and reused across the organization.

This is the architectural transition that separates experimentation from transformation.

Outcome: Enterprise AI scales when architecture shifts from project-by-project pipelines to a contextual data layer that every AI application can rely on.



What High-Performing Enterprises Do Differently

- **Invest in a Contextual Data Layer** that makes unified, current, trusted business context reusable across teams and use cases
- **Standardize meaning, relationships, provenance, and time** as first-class requirements for Enterprise AI
- **Build AI-ready contextual data layers**, then reuse them across copilots, agents, and applications
- **Consolidate fragmented data systems** to reduce fragility, duplication, and operating costs
- **Redirect spend from pipeline maintenance to productized AI capabilities** that ship and scale
- **Align executives and platform teams on a AI-ready data architecture blueprint** for Enterprise AI

Outcome: High-performing organizations treat business context as a product — built once, reused everywhere, and continuously improved as the business evolves.



The Leadership Imperative: Impact on AI Leaders & Builders

Behind every AI transformation are the people carrying the weight of it — CTOs, CIOs, CDOs, CPOs, Heads of AI, platform and enterprise architects, engineering and AI/ML leaders, and innovation leaders.

In a fragmented AI data infrastructure, their day-to-day reality is harder than most realize:

- CTOs unblock teams instead of driving strategy
- Product teams can't ship reliable AI features
- Platform and architecture leaders spend their time stitching systems together instead of designing for scale.
- Innovation leaders prototype fast but can't scale

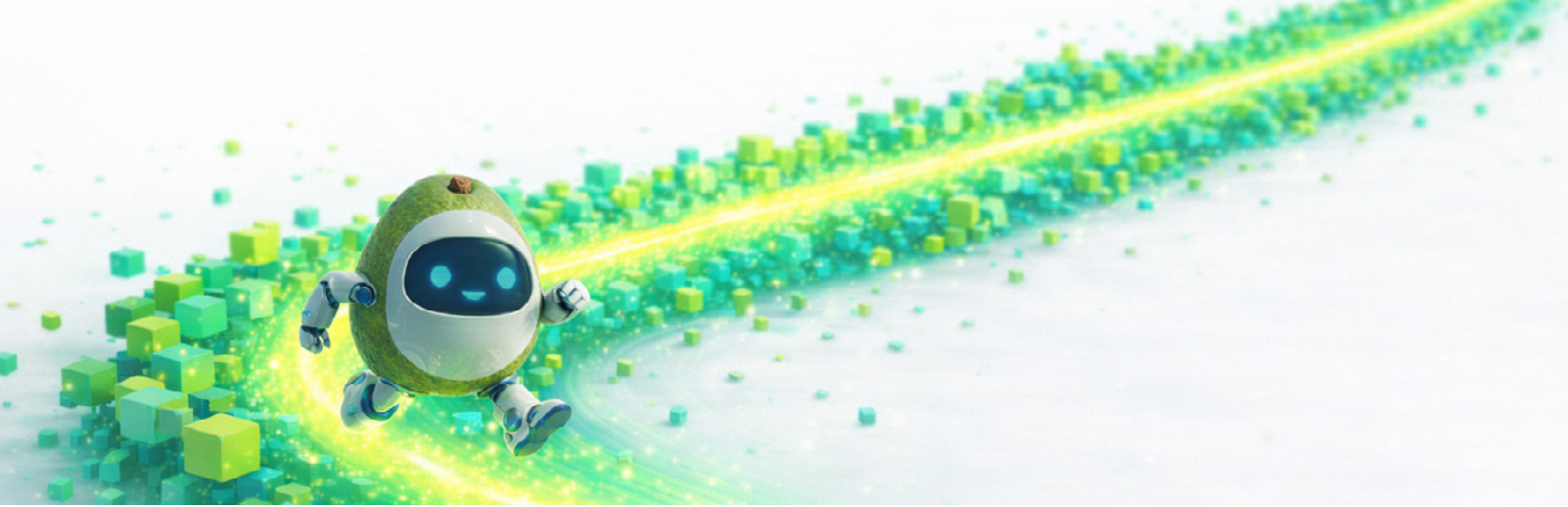
A fragmented architecture drains momentum and creativity. A Contextual Data Layer gives leaders their time, confidence, and momentum back.

When business context is shared, connected, and trustworthy:

- Roadmaps accelerate
- Retrieval is consistent
- AI features ship weekly
- Teams move from repair → creation

The impact extends beyond technology, reshaping how teams operate and collaborate.

Outcome: When context is unified, leaders shift from managing fragility to enabling momentum — freeing teams to build, ship, and innovate with confidence.



AI Data Architecture Playbook: Your Path Forward

This playbook outlines the minimum set of decisions and steps required to move from AI pilots to scalable Enterprise AI — without rebuilding business context for every use case.

- 1 Establish Your AI Data Architecture Strategy**
Define the future-state data architecture needed for co-pilots, agents, retrieval systems, and AI applications.
- 2 Diagnose Your Current Architecture**
Identify fragmentation, fragile pipelines, duplicated semantics, and business context gaps across systems.
- 3 Consolidate Into a Multimodal Contextual Data Layer**
Unify graph + vector + document + key value + search. Make unified, current, and trusted business context reusable.
- 4 Build AI-Ready Data Architecture for Reasoning, Decisions and Actions**
RAG, ContextRAG (GraphRAG, VectorRAG, HybridRAG), Hybrid retrieval, memory systems, natural language interfaces.
- 5 Launch a High-Impact Co-Pilot or Agent**
Start with one flagship use case. Prove value fast — then harden for production (evaluation, feedback loops, and observability) and expand with confidence.

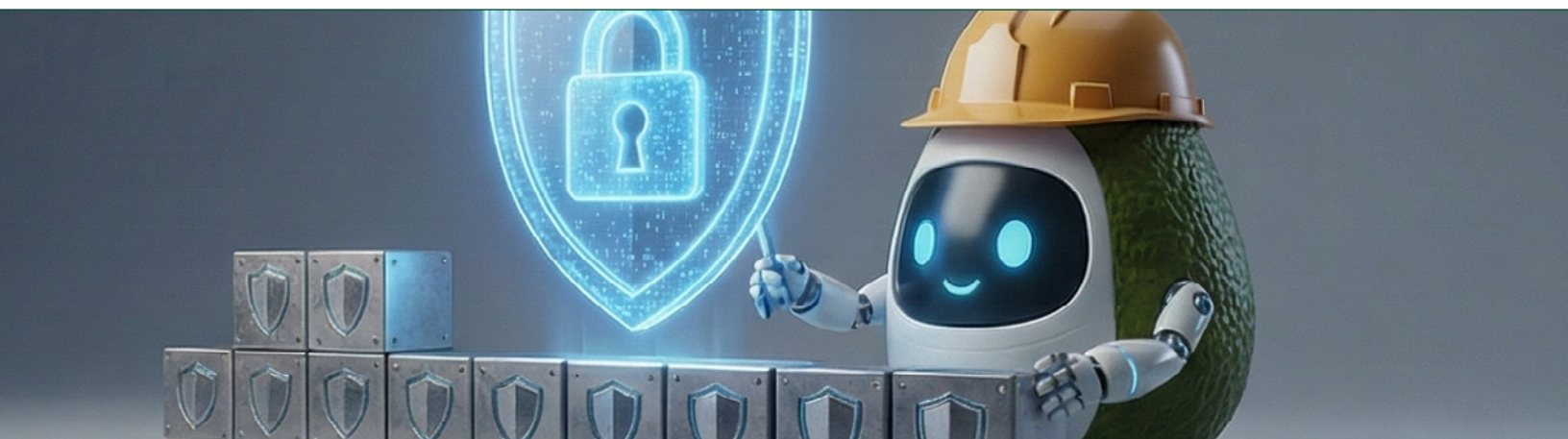
Outcome: A phased approach replaces architectural sprawl with deliberate progress — turning AI ambition into repeatable delivery.

Making the Build vs. Buy Decision for a Contextual Data Layer

A unified Contextual Data Layer is not an infrastructure upgrade — it is the foundation of becoming an AI-powered business.

Executives across industries are reaching the same conclusion: the path to co-pilots, agents, trusted retrieval systems, and measurable Enterprise AI outcomes depends on consolidating fragmented AI data infrastructure into a unified, current and trusted contextual data foundation.

At its core, this is a build-vs-buy decision — and the difference shows up in cost, speed, risk, and competitive advantage.



The Economic Case: Better Accuracy, Lower Cost, Higher ROI

A fragmented AI data infrastructure forces organizations to:

- Maintain 5–12 specialized databases and engines
- Rebuild retrieval and RAG pipelines for every new use case
- Duplicate semantics, lineage, and context across teams
- Absorb rising GPU and compute costs driven by inefficient retrieval

This is why costs often increase faster than value.

A Contextual Data Layer reduces cost while increasing impact:

- One shared contextual data foundation instead of many fragmented data systems
- Reusable retrieval and reasoning services across use cases
- Less rework, faster delivery, and simpler operations

Outcome: Lower total cost of ownership and more budget for differentiated AI capabilities.



The Strategic Case: The Foundation of an AI-Powered Business

A Contextual Data Layer simplifies your AI Data Architecture and enables:

- Reliable, accurate co-pilots for employees across the organization
- Agentic workflows that operate across systems with shared context
- Retrieval that is consistent, explainable, and trustworthy
- Intelligence that spans records, documents, logs, code, and media
- Sustained product and feature innovation

Outcome: Without shared business context, these capabilities remain isolated experiments.

The Risk Case: Reduce Fragility, Strengthen Trust

DIY approaches and Frankenstacks increase risk:

- Hallucinations and contradictory answers
- Context drift as data changes
- Fragile pipelines that break under real usage
- Inconsistent traceability and audit trails

A Contextual Data Layer reduces risk by centralizing:

- Semantic consistency
- Provenance and traceability
- Retrieval accuracy across use cases

Outcome: Fewer failures, safer Enterprise AI, and stronger trust in AI outputs.

The Time-to-Value Case: Faster AI Delivery Across the Business

Fragmented architectures slow everything. A Contextual Data Layer accelerates everything.

Organizations can:

- Launch a flagship co-pilot in an initial 60–90-day phase (scope-dependent), then expand using shared context
- Deliver additional AI use cases in weeks, not quarters
- Reuse retrieval and reasoning across multiple functions
- Ship AI features with confidence in accuracy and trust

Outcome: Shared context turns AI delivery into a repeatable capability, not a one-off project.

The Competitive Case: The Gap Between Leaders and Laggards Is Widening

Organizations adopting contextual AI data architectures are already:

- Reducing resolution times
- Improving sales and service performance
- Launching AI-powered features earlier than competitors
- Delivering personalized customer experiences at scale
- Improving operational efficiency and accuracy simultaneously

Those who delay will compete against organizations whose co-pilots, agents, and retrieval systems make them faster, smarter, and more adaptive.

This is the moment to invest — before the gap becomes unbridgeable.

Outcome: Business context is now a competitive moat — built once, leveraged everywhere.

Build vs. Buy: The Reality of Creating a Contextual Data Layer

Organizations that attempt to build a Contextual Data Layer themselves typically end up with a Frankenstack:

- Complex, fragmented architectures assembled from multiple specialized systems
- Long timelines as foundational capabilities are built, integrated, and reworked
- Operational drag as teams maintain and reconcile multiple layers of context

Organizations that adopt a contextual data foundation gain:

- A simplified, production-ready architecture with shared meaning, relationships, and context built in
- Faster time to market for co-pilots, agents, and AI-powered applications
- Lower total cost of ownership through reuse, consolidation, and reduced operational overhead

The difference shows up quickly — in delivery speed, architectural resilience, and cost efficiency.

This is why leading organizations treat context as a mission-critical foundation, not a project.

Outcome: Organizations that invest in a contextual data layer compound speed, trust, and economics — while those that delay compound complexity.

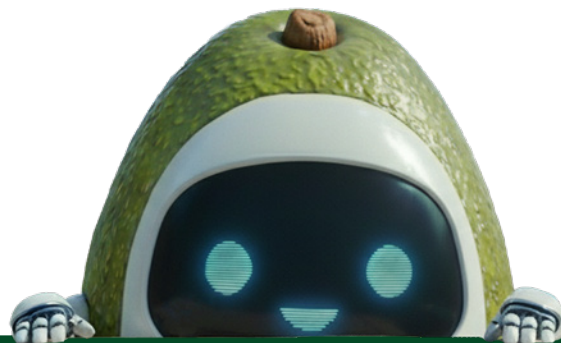


The Moment of Decision

Every executive reaches the same crossroads. Continue building Enterprise AI on fragmented foundations, or adopt a contextual data foundation and build on top of it.

A Contextual Data Layer turns Enterprise AI from fragile experiments into reliable, explainable, and economically scalable capabilities.

Your next step: understand the **six foundational requirements** of a Contextual Data Layer — so you can assess your current stack, identify context debt, and decide where building makes sense and where it doesn't.



**Your competitors aren't waiting.
Neither should you.**

See what a Contextual Data Layer can do for your organization. Talk to us today.

arango.ai